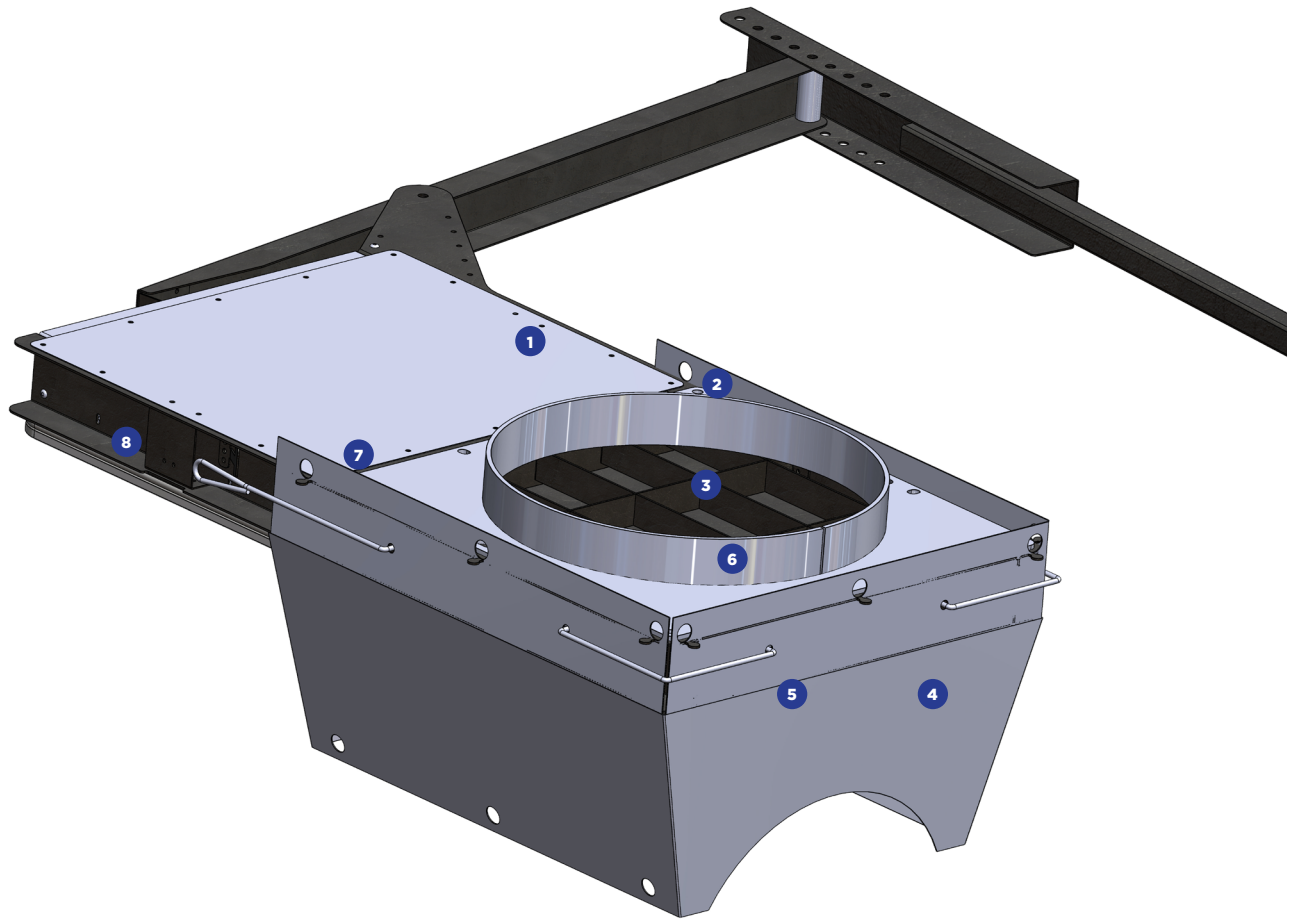
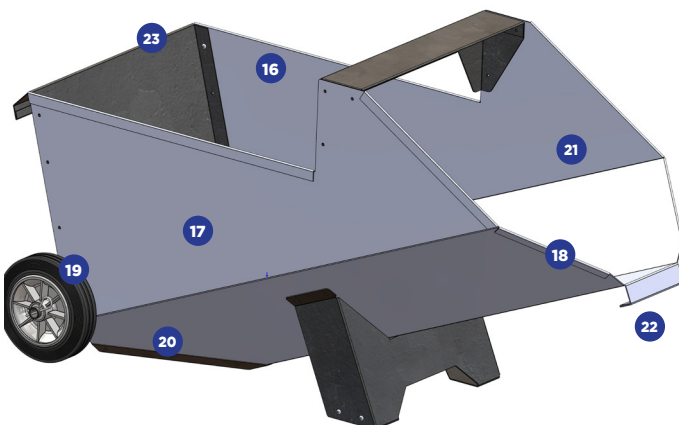
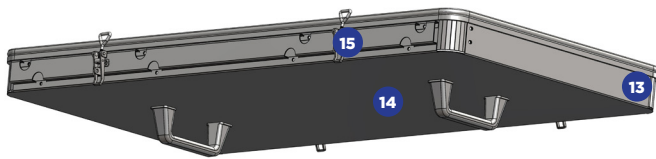
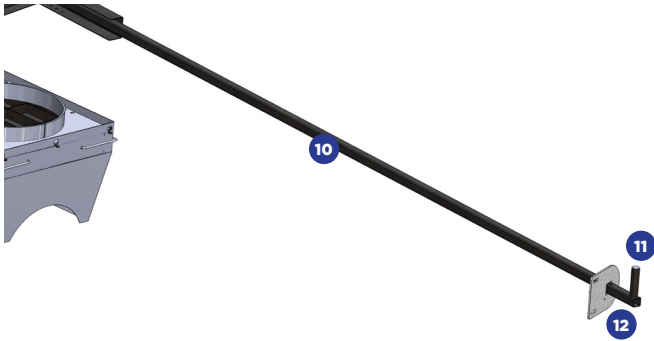
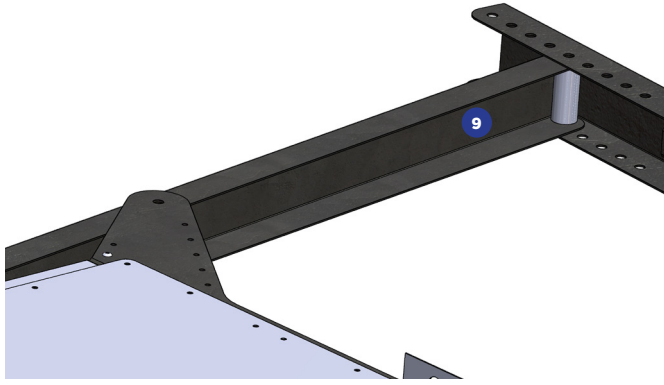


# Grain outlet



- ❶ HDPE slides allow for smooth, friction-free opening and closing that won't jam like a steel-on-steel slide.
- ❷ Large 400mm opening allows full flow of grain for better auger pickup and reduced unloading times
- ❸ Safety guarding prevents someone slipping into the auger if they are working inside the silo. It also helps to break down clumps of grain.
- ❹ Canvas diverter keeps the grain directly over the auger pickup preventing grain from spilling out the front or splashing out of the hopper.
- ❺ 565mm ground clearance allows room for a wide range of augers and shifters and allows for plenty of clearance for plastic hoppers mounted on augers.
- ❻ Top ring is hot-dip galvanised for a long life.
- ❼ Allows easy access to all areas for cleaning and hygiene to help prevent insect issues.
- ❽ No welds in the body of the outlet means no issues with rust, making for a longer life.



- 9 Double length leverage allows for easy opening and closing under heavy loads.
- 10 Outlet opens from outside the silo legs next to the auger, allowing the user to easily adjust the grain flow.
- 11 Handle is fitted at a comfortable height for easy opening.
- 12 Outlet is lockable for sealing and protection of grain.
- 13 Large bubble, long-life rubber seal is used to create a quality seal.
- 14 Lightweight sealing box easily seals the outlet.
- 15 Four adjustable latches are used to provide strong, efficient latching and sealing.
- 16 No-lift design means the hopper is not required to be lifted into position. When the auger is finished the hopper can simply be wheeled out from under the silo even when it is still full of grain.
- 17 1.6mm steel body material protects the hopper from damage.
- 18 Hemmed edges help protect from the hopper from damage.
- 19 Heavy-duty, 200mm diameter wheels allow for easy maneuvering of the hopper even when it is full of grain or on rough terrain.
- 20 A heavy-duty skid plate sits on the ground when the hopper is in use to prevent it from moving.
- 21 The large front opening on the hopper ensures a range of auger sizes can be used at different angles and heights depending on the user's needs.
- 22 Steering handle makes for easy maneuvering of the hopper.
- 23 Rear handle can be used to empty the hopper by allowing the back of the hopper to be lifted so the leftover grain can be poured out the front.